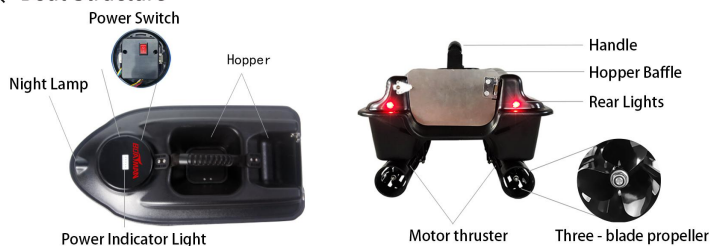


BOATMAN Actor/Actor-Sonar User Manual

ONE. Boat Structure

Actor Basic Structure Description.

1. Boat Structure

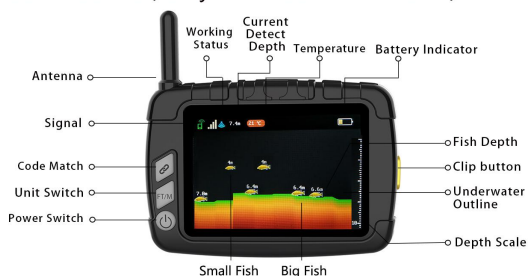


2. Remote Controller Structure

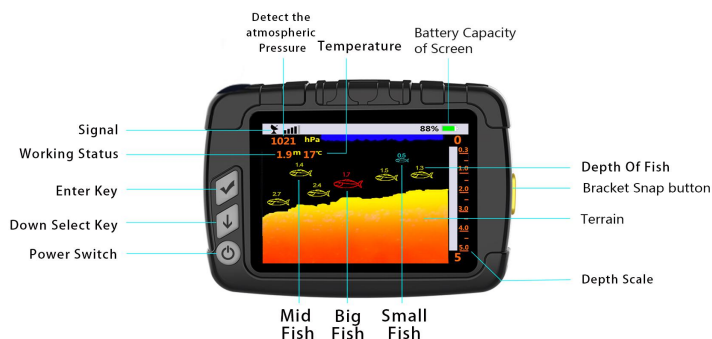


Product Size: 506*267*188MM
 Product Net Weight: 1.6KG
 Hopper Capacity: 1.5KG
 Power: 7.4V-5AH/10AH
 Working Time: 2.5/5 hours
 Max Speed: 70M/min
 RC Distance: 500M
 Charging Voltage: 9V-1A
 Charging Time: 5H/10H

3. Fishfinder Structure (Only Actor-Sonar 1 Verison)



4. Sonar Instruction (For Actor-Sonar 2):



5. Sonar Parameter

Actor-Sonar1

Screen: 3.5" Color Screen
 Detect Depth: 0.6-20M
 Working Range: Within 300M
 Fish Size: Small Fish Icon 10-40CM, Big Fish Icon >40CM

Wireless Frequency: 433MHz
 Detect Angle: 100°
 Detect Accuracy: 0.1M

Actor-Sonar2

Screen: 3.5" Color Screen
 Detect Depth: 0.6-30M
 Working Range: Within 300M
 Fish Size: Small Fish Icon < 40CM, Mid Fish Icon 40-80CM, Big Fish Icon >80CM

Wireless Frequency: 2.4Ghz
 Detect Angle: 100°
 Detect Accuracy: 0.1M

Two. Operation Introduction

(One) Basic Operation

- Boat power on**—Open the battery case , turn on power switch.
- Controller power on** —Press controller "Tower Switch" for 3 seconds, hear" beep" means already opened . Press 3 seconds again, switch off; Without operating for 30 minutes, the controller will close automatically.
- Forward**-push "joystick" up, the boat go straight.
- Backward**-push the "joystick" back , the boat backward.
- Turn left**-push the "joystick" to left , the boat turn left.
- Turn right**-push the "joystick" to right , the boat turn right.
- Stop**- The "joystick" will back to the middle position auto when no operation. , the boat stop.
- Night Lamp**- Press "Night lamp switch" Key to turn on/off .
- Open hopper**—Press left hopper switch to open middle hopper, the rear right flashing 2 times; Press right hopper switch to open rear hopper, rear light flashing 4 times.
- Yawing Correction**—press "Yawing button" , push joystick to left or right, yawing to left then push joystick to right, yawing to right then push joystick left.
- Code match**—press" Night Lamp Switch" for 8 seconds into code match; Switch the boat again, press any button to code match.

TWO. Fishfinder Screen Installation



(Three) Operation Guide

Power On: Keep Pressing Power Switch for 3 Seconds,Approching For 2 Seconds To Enter Manu Interface



Sonar Interface: Select " Sonar Fish Finder" Press Enter Key To Enter Sonar Mode



Power Off: Keep Pressing Power Switch for 3 Seconds, Wait For About 2 Seconds To Power Off



(Four) Battery Assembly

The battery case in the front of the boat,could replace the battery,it also needs to take out the battery for charging every time.The detailed steps as below:



(1)Open the battery case in front. (2)Connect battery with PCB board power plug (3)Ensure two plugs connect well.



(4)Open the power switch (5)Cover battery case tightly After Power on,battery indicator light up

Remark:After opening the battery case,please note do not let the liquid or other things into the circuit board and connect the battery cable plug in right direction.

Hopper

1.Bottom Hopper Baffle Reset

Put the hook or explosive hook at the bottom hopper,it needs to close the hopper baffle manually.



① Bottom hopper on ② Close hopper baffle ③ Turn the steering engine to right for returning back

Warranty

Boatman bait boat already passed strict quality test.Follow the manual to use the product but have quality problem,warranty based on below explanation: Under warranty,Boatman company or distributors provide repair or change components for free; Out of warranty,Boatman or distributors provide repair or change components in reasonable cost.

- 1.Please provide valid sales voucher and after service card.
- 2.Parts Warranty.

Item	Parts Name	Warranty
1	PCB Master Control Board	Warranty Is 1 Year
2	Controller Master Board	
3	Electric Motor	
4	Lithium Battery Charger	Warranty Is 6 Months
5	Hopper Steering Engine	
6	Lithium Battery	

3.Below situations out of warranty.

- (1) Exceed warranty time.
- (2) Invalid sales voucher and after service card.
- (3) The parts that are not covered by the warranty.
- (4) Do not use and protect the product based on manual or damage by improper use.
- (5) Artificial damage,such as impact,extrusion,flop,puncture,intake water,short,etc.
- (6) Damage from natural disaster,such as,fire,flood,thunder and lightning,etc.
- (7) User disassembly bait boat,circuits connect in reverse directions,refit boat,etc.

Boatman company free product.

Warranty Card

Product Name	Boatman	Product Model:	Actor/Actor-Sonar
Product Color	Black	Product Series Number:	
Order Date			
Customers Name			
Where To Buy			
Contact Number			
Full Address			